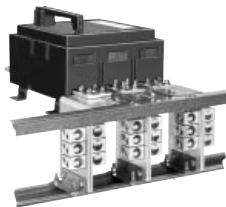




NAL/NCL
 Two- and Three-Pole
 600-1200 Amperes

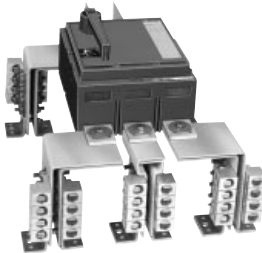


PAF/PHF
 Two- and Three-Pole
 600-2000 Amperes



PALTB

PAF and PHF circuit breakers can be bus or cable connected. For cable connections, optional terminal pad kit PALTB or equivalent bus structure is required. Each PALTB kit contains terminal pads for one end of the circuit breaker only and has provisions for mounting a maximum of six lugs per phase. Order lugs separately. See Pages 6-40 and 6-41.



PCF circuit breakers are supplied with terminal pads for both ends of the circuit breaker. The supplied terminal pads or equivalent bus structure must be used for bus or cable connections. Terminal pads have provisions for mounting a maximum of eight lugs per phase. Order lugs separately. See Pages 6-40 and 6-41.

N Frame – 1200 A, Thermal-Magnetic (600 Vac)

Continuous Current Rating @ 40° C	AC Magnetic Trip Settings▲		Standard Interrupting		Extra High Interrupting		Terminal Wire Range
	Low	High	Catalog Number	Price	Catalog Number	Price	
2-Pole, 600 Vac							
600	4000	8000	NAL26600	\$11024.	NCL26600	\$12694.	AL1200NE6 4-#3/0 AWG-600 kcmil
700	4000	8000	NAL26700	11024.	NCL26700	12694.	
800	4000	8000	NAL26800	11024.	NCL26800	12694.	
900	5000	10000	NAL26900	11024.	NCL26900	12694.	
1000	5000	10000	NAL261000	11024.	NCL261000	12694.	
1200	5000	10000	NAL261200	11024.	NCL261200	12694.	
3-Pole, 600 Vac							
600	4000	8000	NAL36600	\$12094.	NCL36600	\$13620.	AL1200NE6 4-#3/0 AWG-600 kcmil
700	4000	8000	NAL36700	12094.	NCL36700	13620.	
800	4000	8000	NAL36800	12094.	NCL36800	13620.	
900	5000	10000	NAL36900	12094.	NCL36900	13620.	
1000	5000	10000	NAL361000	12094.	NCL361000	13620.	
1200	5000	10000	NAL361200	12094.	NCL361200	13620.	

P Frame – 2000 and 2500 A, Thermal-Magnetic (600 Vac)

Ampere Rating	AC Magnetic Trip Settings▲		2-pole – 600 Vac				Total Price†	3-pole – 600 Vac				Total Price†
	Low	High	Frame Only		Rating Columns Two Per Kit			Frame Only		Rating Columns Three Per Kit		
			Catalog No.	Price	Kit Catalog No.	Kit Price		Catalog No.	Price	Kit Catalog No.	Kit Price	

2000 Ampere Frame

PAF Standard Interrupting – Complete Circuit Breaker Requires Frame and Rating Columns												
600	3200	9000			PA2600RC	\$232.			PA3600RC	\$350.		
700	3200	9000			PA2700RC	232.			PA3700RC	350.		
800	3200	9000			PA2800RC	232.			PA3800RC	350.		
1000	3500	9000			PA21000RC	232.			PA31000RC	350.		
1200	3500	9000	PAF2026	\$10809.	PA21200RC	232.	\$11041.	PAF2036	\$13855.	PA31200RC	350.	\$14205.
1400	4500	9000			PA21400RC	232.			PA31400RC	350.		
1600	5000	10000			PA21600RC	232.			PA31600RC	350.		
1800	6500	11000			PA21800RC	232.			PA31800RC	350.		
2000	8000	12000			PA22000RC	232.			PA32000RC	350.		

PHF High Interrupting – Complete Circuit Breaker Requires Frame and Rating Columns

600	3200	9000			PA2600RC	\$232.			PA3600RC	\$350.		
700	3200	9000			PA2700RC	232.			PA3700RC	350.		
800	3200	9000			PA2800RC	232.			PA3800RC	350.		
1000	3500	9000			PA21000RC	232.			PA31000RC	350.		
1200	3500	9000	PHF2026	\$12397.	PA21200RC	232.	\$12629.	PHF2036	\$15347.	PA31200RC	350.	\$15697.
1400	4500	9000			PA21400RC	232.			PA31400RC	350.		
1600	5000	10000			PA21600RC	232.			PA31600RC	350.		
1800	6500	11000			PA21800RC	232.			PA31800RC	350.		
2000	8000	12000			PA22000RC	232.			PA32000RC	350.		

2500 Ampere Frame




PCF High Interrupting – Complete Circuit Breaker Requires Frame and Rating Columns												
1600	6000	12000			PC21600RC	\$232.			PC31600RC	\$350.		
1800	6000	12000			PC21800RC	232.			PC31800RC	350.		
2000	6000	12000	PCF2526	\$19945.	PC22000RC	232.	\$20177.	PCF2536	\$24655.	PC32000RC	350.	\$25005.
2500	8000	14000			PC22500RC	232.			PC32500RC	350.		

† Price does not include lugs. See Pages 6-40 and 6-41 for catalog numbers and prices.
 ▲ UL magnetic trip setting tolerances are ±25% (Low) and ±20% (High) from the nominal values shown.

Interrupting Ratings (kA)

	NAL	NCL	PAF	PHF	PCF
240 V	100	125	65	125	125
480 V	50	100	50	100	100
600 V	25	65	42	65	65

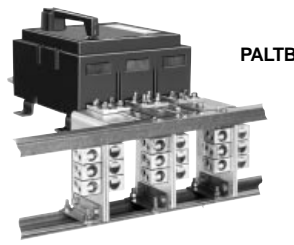
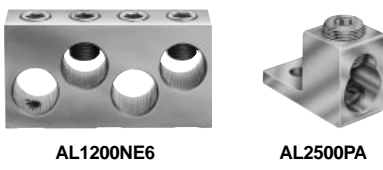
AccessoriesPages 6-37–6-39
 Optional LugsPages 6-40, 6-41
 Dimensions.....Page 6-45, 6-46
 Enclosures.....Pages 6-47–6-50
 Catalog Numbering System.....Page 6-23

	1000A				1200A				1200 A			
												
Breaker Type	MA	MH	MX	ME	NA	NC	NX	NE	PG	PJ	PL	
Number of Poles	2, 3	2,3	3	3	2, 3	2,3	3	3	2,3	2,3	2,3	
Current Range	300–1200	300–1200	450–800	450–800	600–1200	600–1200	600–1200	600–1200	100–1200	100–1200	100–1200	
Interrupting Ratings												
UL/CSA/NOM Rating (kA RMS) (50/60 Hz AC)	240 Vac	42	65	65	65	100	125	125	125	65	100	125
	480Y/277 Vac	30	65	65	65	50	100	100	100	35	65	100
	480 Vac	30	65	65	65	50	100	100	100	35	65	100
	600Y/347 Vac	22	25	25	25	25	65	65	65	18	25	★
DC Ratings	600 Vac	22	25	25	25	25	65	65	65	18	25	★
	250 Vdc	14	14
	500 Vdc ♦	...	20
IEC 947-2 415/240 Vac (Icu/Ics) ☆	30/30	65/33	65/33	65/33	50/25	70/35	70/35	70/35	50/35	65/35	100/50	
IEC 947-2 50/60 Hz	For additional IEC ratings, see Supplemental Digest.											
Special Ratings												
Fed. Specs W-C-375B/GEN	✓	✓	✓	✓	✓	✓	✓	✓	✓	✓	✓	
HACR (2, 3-Pole)									✓	✓	✓	
Connections/Terminations												
Unit Mount	✓	✓	✓	✓	✓	✓	✓	✓	✓	✓	✓	
I-LINE	✓	✓	✓	✓	✓	✓	✓	✓	✓	✓	✓	
Rear Connection	✓	✓										
Drawout												
Optional Lugs	✓	✓	✓	✓	✓	✓	✓	✓	✓	✓	✓	
Accessories and Modifications												
Shunt Trip	✓	✓	●	●	✓	✓	✓	✓	✓	✓	✓	
Undervoltage Trip	✓	✓	●	●	✓	✓	✓	✓	✓	✓	✓	
Auxiliary Switches	✓	✓	●	●	✓	✓	✓	✓	✓	✓	✓	
Alarm Switch	✓	✓	●	●	✓	✓	✓	✓	✓	✓	✓	
Motor Operator	✓	✓										
Handle Operators	✓	✓	✓	✓	✓	✓	✓	✓	✓	✓	✓	
Mechanical Interlocks (3-Pole)	■	■										
Handle Padlock Attachment	✓	✓	✓	✓	✓	✓	✓	✓	✓	✓	✓	
Cylinder Lock (3-Pole)	✓	✓							✓	✓	✓	
Optional GF Protection			●	●			●	●	✓	✓	✓	
Trip System Type												
Thermal Magnetic	✓	✓			✓	✓						
Instantaneous Trip (3-Pole)	✓	✓			✓	✓				✓		
Molded Case Switch (Automatic)		✓				✓			✓	✓	✓	
Electronic			✓	✓			✓	✓	✓	✓	✓	
Enclosures (Pages 6-47–6-50)												
General Purpose (NEMA Type 1)	✓	✓	✓	✓								
Raintight (NEMA Type 3R)	✓	✓	✓	✓	✓	✓	✓					
Dusttight (NEMA Type 12)	✓	✓	✓	✓	✓	✓	✓					
Watertight (NEMA Type 4, 4X, 5)	✓	✓	✓	✓								
Explosion Proof (NEMA Type 7, 9)												
Dimensions (3P Unit Mount)	Height IN (mm)	14 (356)		14.75 (375)		12.12 (308)			16.20 (413)			
	Width IN (mm)	9 (229)		9 (229)		15 (381)			8.30 (210)			
	Depth IN (mm)	6.5 (165)		6.5 (165)		8.07 (205)			8.10 (205)			
Pages (Unit Mount)/(I-LINE)	Pages 6-24, 8-32		Pages 6-33, 8-34		Pages 6-25, 8-32		Pages 6-33, 8-34		Pages 6-10, 6-13, 6-15, 8-24, 8-25, 8-26			

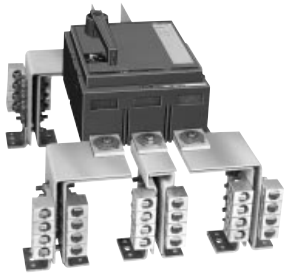
NOTE: All circuit breakers on this chart are UL Listed and CSA Certified unless otherwise noted.
 ● Factory installed option only ★ Contact your nearest Square D/Schneider Electric sales office for 600 V ratings.
 ■ Requires breaker with WB suffix. ☆ Dual UL and IEC ratings and CE markings on circuit breakers. For additional IEC ratings, see Supplemental Digest.
 ♦ Ungrounded UPS systems only.

I-LINE is a Registered Trademark of Square D Company or related companies.





PAF, PHF, PXF-12, PEF-12, PXF-16, PEF-16, and PXF-20 circuit breakers can be bus or cable connected. For cable connections, optional terminal pad kit PALTB or equivalent bus structure is required. Each PALTB kit contains terminal pads for one end of the circuit breaker only and has provisions for mounting a maximum of six lugs per phase. Order lugs separately. See this page and Page 6-41.



PCF, PEF-20, PXF-25 or PEF-25 circuit breakers are supplied with terminal pads for both ends of the circuit breaker. The supplied terminal pads or equivalent bus structure must be used for bus or cable connections. Terminal pads have provisions for mounting a maximum of eight lugs per phase. Order lugs separately. See this page and Page 6-41.

Mechanical Lug Kit Information

Circuit Breaker Application				Number of Wires Per Lug and Wire Range♦	Kit Catalog Number	Lugs Per Kit	Price Per Kit
Standard	Ampere Rating	Optional	Ampere Rating				
Al Lugs for Use with Al or Cu Wire							
EDB, EGB, EJB, FD, FG, FJ	15-30	1—#12-#6 AWG Al or 1—#14-#6 AWG CU	AL30FD	3	\$ 26.20
EDB, EGB, EJB, FD, FG, FJ	35-125	EDB, EGB, EJB, FD, FG, FJ	15-30	1—#12-#2/0 AWG Al or 1—#14-#2/0 AWG CU	AL100FD	3	26.20
FA, FH, FI	15-30	FA, FH, FI	35-100	1—#14-#4 AWG Cu or 1—#12-#4 AWG Al	AL50FA	3	23.60
FC	35-100	FC	15-30	1—#14-#3 AWG Cu or 1—#12-#1 AWG Al	AL100FA4	3	23.60
FA, FH, FI	35-100	FA, FH, FI	15-30	1—#14-#1/0 AWG Cu or 1—#12-#1/0 AWG Al	AL100FA	3	23.60
....	FA, FH, FC	15-100	1—#12-#3 AWG CU	AL100TF*	3	23.60
....	FA	150 (only)	1—#1/0 #2/0 AWG	AL150FA	3	23.60
ME, MX	100-250	1—#6 AWG-350 kcmil	AL250ME	3	71.00
KA, KH	70-250	1—#4 AWG-350 kcmil	AL250KA	3	71.00
KI, KC	110-175	1—#6 AWG-350 kcmil	AL250KD	3	68.00
KD, KG	100-250	1—#6 AWG-350 kcmil	AL250KI	3	68.00
KI, KC	200-250	KI	110-175	1—#1/0 AWG-350 kcmil	AL250KI	3	68.00
Q4, LA, LH	125-400	1—#1 AWG-600 kcmil or 2—#1 AWG-250 kcmil	AL400LA	1	22.70
....	Q4, LA, LH	125-400	1—350-750 kcmil	AL400LH7	1	29.90
LE, LX, LXI	100-250	LC, LI, LE, LX, LXI	2—#1 AWG-350 kcmil	AL600LI35	1	24.00
LC, LI, LE, LX, LXI	300-600	LE, LX, LXI	100-250	2—#4/0 AWG-500 kcmil	AL600LI5	1	29.90
....	LC, LI, LE, LX, LXI	1—500-750 kcmil	AL600LI7	1	29.90
....	ME, MX	250-400	1—350-750 kcmil	AL400ME7	1	29.90
....	MA, MH	300-1000	2—500-750 kcmil	AL800MA7	1	88.00
....	ME, MX	100-800	2—500-750 kcmil	AL800MA7	1	88.00
MA, MH	300-1000	3—#3/0 AWG-500 kcmil	AL900MA	1	60.00
ME, MX	300-800	ME, MX	100-250	4—#1/0 AWG-350 kcmil	AL1000MA	1	60.00
....	MA, MH, ME, MX	300-1200	4—#1/0 AWG-350 kcmil	AL1000MA	1	60.00
NA, NC, NE, NX	600-1200	4—#3/0 AWG-600 kcmil	AL1200NE6	1	136.00
....	PAF, PHF, PEF, PXF, PCF	600-2500	1—#1/0 AWG-750 kcmil	AL2500PA	2	84.00

Cu Lugs for Use with Cu Wire Only

....	EDB, EGB, EJB, FD, FG, FJ	15-125	1—#14-#1/0 AWG Cu	CU100FD	3	26.20
FC	15-30	1—#14-#10 AWG Cu	CU30FA4	3	23.60
....	FA, FH, FC, FI	15-100	1—#14-#1 AWG Cu	CU100FA	3	23.60
....	FA, FH, FC	15-100	1—#12-#3 AWG Cu	CU100TF*	3	23.60
....	KA, KH	70-250	1—#4 AWG-250 kcmil Cu	CU250KA	3	71.00
....	KC, KI	110-250	1—#4 AWG-250 kcmil Cu	CU250KA	3	71.00
KD, KG	100-250	1—#6 AWG-350 kcmil	CU250KD	3	71.00
....	ME, MX	125-250	1—#4 AWG-250 kcmil	CU250ME	3	71.00
....	Q4, LA, LH	125-400	1—#1 AWG-600 kcmil Cu or 2—#1 AWG-250 kcmil Cu	CU400LA	1	23.70
....	LC, LI, LE, LX, LXI	2—#1 AWG-350 kcmil	CU600LI35	1	25.10
....	LC, LI, LE, LX, LXI	2—#4/0 AWG-500 kcmil	CU600LI5	1	29.90
....	LC, LI, LE, LX, LXI	1—500-750 kcmil	CU600LI7	1	29.90
....	ME, MX	100-800	3—#3/0 AWG-500 kcmil Cu	CU1000MA	1	60.00
....	MA, MH	300-1000	3—#3/0 AWG-500 kcmil Cu	CU1000MA	1	60.00
....	NA, NC, NE, NX	600-1200	4—#3/0 AWG-600 kcmil Cu	CU1200NE6	1	348.00

- ♦ All P-frame circuit breakers require terminal pads for mounting lugs of any type. See table at bottom of the page.
- ◆ Unless otherwise specified, wire sizes apply to both aluminum and copper conductors.
- * For use in the OFF end only, when the OFF end is the load end.

Terminal Pad Kits for PA, PH, PC, PE and PX Circuit Breakers

Circuit Breaker Prefix	Terminal Pad Kit	
	Catalog Number	Price
PAF, PHF, PXF-12, PEF-12, PXF-16, PEF-16, PEF-20	PALTB (See photo A at left)	\$580.00
PCF, PEF-20, PXF-25, PEF-25	Included with circuit breaker (See photo B at left)
RGF, RJF, RLF	RLTB	*

* Contact your nearest Square D/Schneider Electric sales office for current prices.



Dimensions and Shipping Weights

Class 500, 600

Square D
www.squared.com
FOR CURRENT INFORMATION

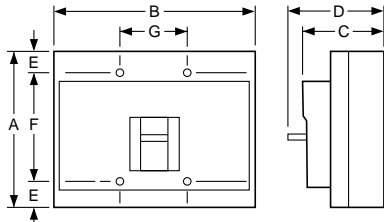


Figure 27

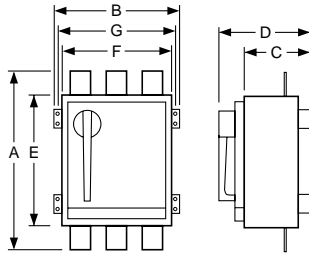


Figure 28

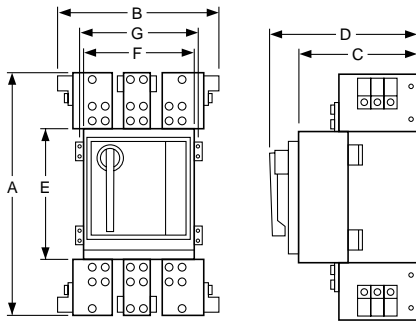


Figure 29

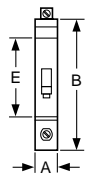


Figure 30

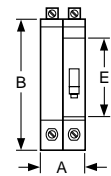


Figure 31

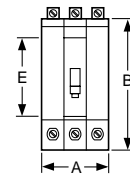


Figure 32

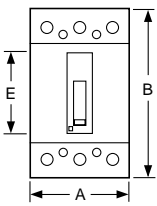
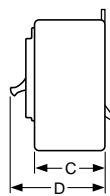


Figure 33

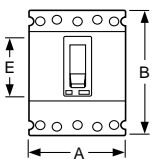


Figure 34

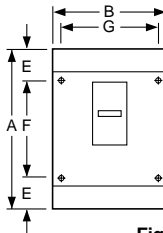


Figure 35

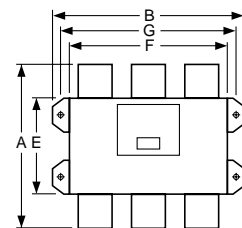
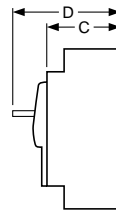


Figure 36

LC, LI, LE, LX, LXI, NA, NE, NX, PA, PC, PE, and PX Circuit Breakers

Circuit Breaker Catalog No. Prefix	No. Poles	Fig. No.	Dimensions - Inches						
			A	B	C	D	E	F	G
LC, LI, LE, LX, LXI	2 & 3	27	11.86	7.50	5.48	6.74	0.55	10.75	2.50
NA, NC, NX, NE	2 & 3	27	12.12	14.98	6.40	8.07	1.69	8.75	5.00
PA, PH, PX, PE	2 & 3	28	20.06	13.70	7.25	10.47	14.00	12.00	12.75
PC, PX-25, PE-20-25	2 & 3	29	26.10	23.30	13.33	16.55	14.10	12.00	...

ED, EG, EJ, KD, KG and GJ Circuit Breakers

Circuit Breaker Catalog No. Prefix	No. of Poles	Fig. No.	Dimensions - Inches				
			A	B	C	D	E
ED, EG, EJ	1	30	0.98	5.66	3.09	4.05	3.32
	2	31	1.96	5.66	3.09	4.05	3.32
	3	32	2.94	5.66	3.09	4.05	3.32
KD, KG	2, 3	33	4.12	7.35	3.20	4.17	3.34
GJ	3	34	3.54	4.72	2.76	3.94	2.20

MG, MJ, PG, PJ, PL, RG, RJ and RL Circuit Breakers

Circuit Breaker Catalog No. Prefix	No. of Poles	Fig. No.	Dimensions - Inches						
			A	B	C	D	E	F	G
MG, MJ	2, 3	35	12.40	8.27	5.53	8.05	2.28	7.87	7.87
PG, PJ, PL	2, 3	35	16.29	8.27	5.53	8.05	4.19	7.87	7.87
RG, RJ, RL	2, 3	36	15.00	16.54	6.30	14.38	8.73	14.25	15.35

Frame Size	Approx. Shipping Weight (Lbs.)	Frame Size	Approx. Shipping Weight (Lbs.)
ED, EG, EJ 1-pole	2	MAL	
ED, EG, EJ 2-pole	3	MHL	34
ED, EG, EJ 3-pole	4	MXL	
FAL		MEL	44
FHL 1-pole	2	NAL	
FHL 2-pole	3	NCL	49
FHL 3-pole	5	MG	
FCL		MJ	24
FIL	8	NXL	
GJ	3	NEL	65
KD		PAF	
KG	5	PHF	69
KAL		PG	
KHL	7	PJ	
KCL		PL	32
KIL	9	PXF	
LAL		PEF	80
LHL	15	RG	
LEL		RJ	
LCL		RL	52
LIL		Q2L	4
LXL	25	Q4L	15

All weights are for 3-pole circuit breakers unless otherwise noted.

