

Power Distribution Blocks



Series 11675

Quick-Connect Power Distribution Block

Ratings: 40A, 250V; UL/CSA

Poles: 2 to 6 poles with (3) .250" quick-connect terminals per pole.

Input Wire Sizes: #8 – #14 CU

Torque Rating: 9 in/lb max.

Operating Temperature: 150°C

Design: For equipment that requires screw connections in the field. Reduces assembly costs of internal wiring.

Agency Approvals: UL E62622; CSA LR15364

CE



Series 11725

Quick-Connect Power Distribution Block

Ratings: 70A, 600V; UL/CSA

Poles: 2, 3 or 4 poles with (4) .250" quick-connect terminals per pole.

Input Wire Sizes: #2 – #14 CU/#8 AL

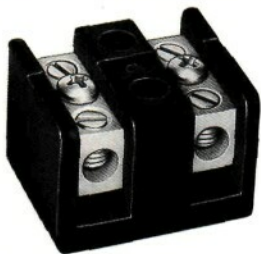
Torque Rating: 45 in/lb max.

Operating Temperature: 150°C

Design: For equipment that requires screw connections in the field. Reduces assembly costs of internal wiring.

Agency Approvals: UL E62622; CSA LR15364

CE



Series 14002

Barrier Terminal Block

Ratings: 115A, 600V; UL/CSA

Poles: 2 to 6 poles

Wire Sizes: #2 – #14 CU/#8 AL

Operating Temperature: 150°C

Marking: Marking strip optional, consult factory.

Options For Load Side Connector:

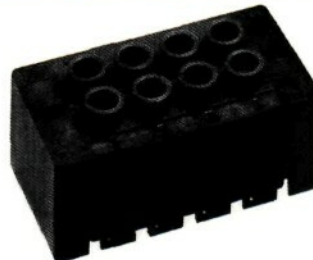
CP: Sems pressure plate, rated 60A, 600V

Q: Quick-Connect, rated 50A, 600V

To order options, enter letter code in front of Part No.: ie; CP14002-2.

Agency Approvals: UL E62622; CSA LR15364

CE



Series 14004

Dead Front Terminal Block

Ratings: 90A, 600V; UL/CSA

Poles: 2 to 12 poles

Wire Sizes: #4 – #14 CU/#8 AL

Operating Temperature: 75°C

Marking: Marking strip optional, consult factory.

Agency Approvals: UL E62622; CSA LR15364

CE



Power Distribution & Terminal Blocks



Series 160, 162, 163 & 165

Ratings: To 840A, 600V; UL Recognized/CSA. See Table.

Materials: Molded material: Black, UL rated 94V-0 thermoplastic.

Operating Temperature: 150°C

Marking: Marker strip is optional; consult factory.

Agency Approvals: UL E62622 General Industrial Class per UL 1059; CSA LR15364; CE Pending.

Power Distribution Blocks (600V) Catalog Data

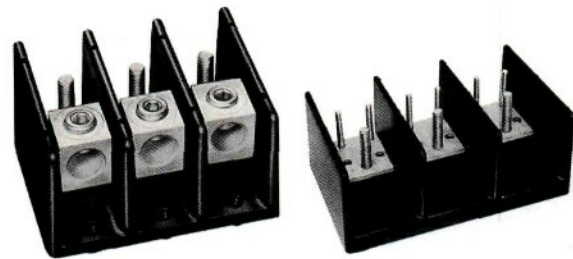
Part Number	Line Connection	Load Connection	Connector Material & Ampacity	Agency Approvals
*16021	2/0-#14CU/#8AL	⁽²⁾ #4-#14CU/#8AL	AL-175A	UL CSA
*16023	350MCM-#6CU-AL	⁽²⁾ #4-#14CU/#8AL	AL-310A	UL CSA
16220	2/0-#14CU/#8AL	⁽²⁾ #4-#14CU/#8AL	AL-175A	UL CSA
16321	2/0-#14CU-AL	⁽²⁾ #4-#14CU/#8AL	AL-175A	UL CSA
16323	350MCM-#6CU-AL	⁽²⁾ #4-#14CU/#8AL	AL-310A	UL CSA
16325	⁽²⁾ 2/0-#14CU/#8AL	⁽²⁾ #4-#14CU/#8AL	AL-350A	UL CSA
16330	500MCM-#6CU-AL	⁽²⁾ #2-#14CU/#8AL	AL-380A	UL CSA
16332	350MCM-#6CU-AL	⁽²⁾ #2-#14CU/#8AL ⁽¹⁾ 1/0-#14CU/#8AL	AL-310A	UL CSA
16335	500MCM-#6CU-AL	⁽³⁾ #2-#14CU/#8AL ⁽²⁾ 1/0-#14CU/#8AL	AL-380A	UL CSA
16370	350MCM-#6CU-AL	⁽¹⁾ #4-#14CU/#8AL	AL-310A	UL CSA
16371	350MCM-#6CU-AL	⁽²⁾ #2-#14CU/#8AL ⁽³⁾ 1/0-#14CU/#8AL	AL-310A	UL CSA
16372	350MCM-#6CU-AL	⁽²⁾ #10-#14CU/#10AL	AL-310A	UL CSA
16373	350MCM-#6CU-AL	⁽³⁾ 1/0-#14CU/#8AL ⁽¹⁾ #10-#14CU/#8AL	AL-310A	UL CSA
16375	600MCM-#2CU-AL	⁽¹⁾ #4-#14CU/#8AL	AL-420A	UL CSA
16376	600MCM-#2CU-AL	⁽²⁾ #2-#14CU/#8AL ⁽³⁾ 1/0-#14CU/#8AL	AL-420A	UL CSA
16377	⁽²⁾ 300MCM-#2CU-AL	⁽¹⁾ #4-#14CU/#8AL	AL-570A	UL —
16528	⁽²⁾ 600MCM-#2CU-AL	⁽¹⁾ 3/0-#8CU-AL ⁽⁴⁾ #4-#14CU/#8AL	AL-840A	UL CSA
16530	⁽²⁾ 500MCM-#6CU-AL	⁽¹⁾ #4-#14CU/#8AL	AL-760A	UL CSA

*160 Series Bases have mounting holes outside the barriers. Other bases (162 through 165) have mounting holes within barriers. See BIF document for dimensional drawings.

How To Order: Catalog Number + # of Poles

Example: 16020 – 3 (complete part number)

Optional covers: 160 Series: CPB 160 - (pole)
162 Series: CPB 162 - (pole)
165 Series: CPB 165 - (pole)



Series 162, 163, 165

Ratings: To 760A, 600V; UL Recognized/CSA. See Table.

Materials: Molded material: Black, UL rated 94V-0 thermoplastic.

Operating Temperature: 150°C

Agency Approvals: UL E62622 General Industrial Class per UL 1059; CSA LR15364; CE Pending.

Connector-Stud Blocks (600V) Catalog Data

Part Number	Line Connection	Load Connection	Connector Material & Ampacity	Agency Approvals
Connector to Stud				
16280	2/0-#14CU/#8AL	1/4-20 x 1/2 Stud	AL-175A	UL CSA
16281	2/0-#14CU/#8AL	1/4-20 Tapped hole	AL-175A	UL CSA
16378	500MCM-#6CU-AL	⁽²⁾ 1/4-20 x 1 Stud	AL-380A	UL CSA
16383	500MCM-#6CU-AL	⁽¹⁾ 3/8-16 x 1 1/4 Stud	AL-380A	UL CSA
16582	⁽²⁾ 500MCM-#6CU-AL	⁽²⁾ 3/8-16 x 1 1/4 Stud	AL-760A	UL CSA
Stud to Stud				
16390	3/8-16 x 1 1/4 Stud	3/8-16 x 1 1/4 Stud	CU-250A	UL CSA
16394	1/2-13 x 1 1/8 Stud	1/2-13 x 1 1/8 Stud	CU-400A	UL CSA
16395	3/8-16 x 1 1/8 Stud	⁽²⁾ 1/4-20 x 9/16 Stud	CU-310A	UL CSA
16591	3/8-16 x 1 1/8 Stud	⁽²⁾ 3/8-16 x 1 1/8 Stud	CU-400A	UL —
16593	1/2-13 x 1 Stud	1/2-13 x 1 Stud	CU-600A	UL CSA

Series 160, 162, 163 and 165

Ratings: To 620A, 600V; UL Recognized/CSA. See Table.

Materials: Molded material: Black, UL rated 94V-0 thermoplastic.

Operating Temperature: 150°C

Marking: Marker strip is optional; consult factory.

Agency Approvals: UL E62622 General Industrial Class per UL 1059; CSA LR15364; CE Pending.

Power Distribution Blocks (600V) Catalog Data

Part Number	Line Connection	Load Connection	Connector Material & Ampacity	Agency Approvals
*16000	2/0-#8CU-AL	2/0-#8CU-AL	AL-175A	UL —
*16003	250MCM-#6CU	250MCM-#6CU	CU-255A	UL —
*16005	350MCM-#6CU-AL	350MCM-#6CU-AL	AL-310A	UL —
16200	#2-#14CU/#8AL	#2-#14CU/#8AL	AL-115A	UL CSA
16201	1/0-#14CU	1/0-#14CU	CU-150A	UL CSA
16204	2/0-#8CU-AL	2/0-#8CU-AL	AL-175A	UL CSA
16301	250MCM-#6CU	250MCM-#6CU	CU-255A	UL CSA
16303	350MCM-#6CU-AL	350MCM-#6CU-AL	AL-310A	UL CSA
16306	500MCM-#6CU-AL	500MCM-#6CU-AL	AL-380A	UL CSA
16500	⁽²⁾ 350MCM-#4CU-AL	⁽²⁾ 350MCM-#4CU-AL	AL-620A	UL CSA
16504	⁽²⁾ 500MCM-#6CU-AL	⁽²⁾ 500MCM-#6CU-AL	AL-760A	UL CSA

*160 Series Bases have mounting holes outside the barriers. Other bases (162 through 165) have mounting holes within barriers. See BIF documents for dimensional drawings.

CE logo denotes compliance with European Union Low Voltage Directive (50-1000V AC, 75-1500V DC). Refer to BIF document #8002 or contact Bussmann Application Engineering at 636-527-1270 for more information.

CE logo denotes compliance with European Union Low Voltage Directive (50-1000V AC, 75-1500V DC). Refer to BIF document #8002 or contact Bussmann Application Engineering at 636-527-1270 for more information.

BIF document: 1117 (Series 160, 162, 165); 1148 (Series 163)

BIF document: 1117 (Series 160, 162, 165)



For complete specification data, call Bussmann Information Fax ~ 636.527.1450